

2019/2020 Annual Report

Arts, culture & liveability

THE SIR ANDREW & LADY
FAIRLEY
FOUNDATION



Contents

History	3
Chairs Report	4
Executive Report	5
Trustees	6
Heinz Music Program	8
Fairley La Trobe Lecture	8
Greater Shepparton Foundation	9
Case Study: Early Start to Kinder (ESK) Project.....	9

Projects	10
Shepparton Art Museum	11
Play Therapy Training	12
Shepparton Story House & Case Study	13
Shepparton Festival.....	14
McGuire College Marimba Workshop	15
Food Link.....	15
Australian Ballet.....	16
John Noble Quartet	17
Bangerang Cultural Centre	17
True Vision	18
Science Schools Program	18
Funding	19



Contact

Amanda McCulloch
Executive Officer

144 Welsford St, Shepparton VIC 3630
M 0481 315 684
E amanda@fairleyfoundation.org
www.fairleyfoundation.org

Acknowledgement of Country

The Sir Andrew & Lady Fairley Foundation wishes to acknowledge the traditional custodians of the land which now comprises Greater Shepparton. We pay respect to the tribal elders, past present and emerging, celebrate their continuing culture and connection to land, water and community.



History

The Sir Andrew and Lady Fairley Foundation (Fairley Foundation) was established in 1965 with a bequest from respected Shepparton businessman, Sir Andrew Fairley and his wife Mineta. As Managing Director of Shepparton Preserving Company Ltd. (SPC) Sir Andrew created what by the mid-1960's was the largest fruit preserving and canning complex in the southern hemisphere. In 1927 he became the first Mayor of the Borough of Shepparton and from 1948 the first Mayor of the City of Greater Shepparton.

According to his instructions, the Fairley Foundation is for the benefit of the people and communities of the Greater Shepparton area. Over the last 56 years, the Foundation has been recognised as a trusted voice in support of the community, influential in many areas of local life: education, employment, the arts, health, sport, social justice and disadvantage.



Vision & Purpose

Vision:

To drive momentous social and cultural change in Greater Shepparton

Purpose:

- Enable a flourishing arts culture in Greater Shepparton
- Facilitate the success of the Greater Shepparton Foundation
- Promote liveability and acceptance in Greater Shepparton

Chairs Report

On behalf of the Trustees of the Sir Andrew & Lady Fairley Foundation I am pleased to present the 2020 Fairley Foundation Annual Report. This reporting period has heralded some significant challenges for the Greater Shepparton community, our partners and our Foundation, as we experienced the full impact of the pandemic and a global market downturn. The first six months of the year were certainly markedly different from the second!



What Greater Shepparton has demonstrated in these trying times is the ability to adapt, think strategically and innovate to overcome.

Arts support has always been a priority for the Foundation, with grants to the Australian Ballet, the Melbourne Symphony Orchestra and the Shepparton Festival. This support is provided to enhance performance and education opportunities for students within Shepparton.

The Foundation continues with its ongoing support for the Heinze Music Program. This is having a significant impact on the literacy and numeracy of those students involved in some of our primary schools.

The onset of COVID presented different and society wide challenges, particularly amongst those whose incomes and support were dramatically affected.

The Foundation worked in conjunction with the Greater Shepparton Foundation to support some urgent needs during the worst of the pandemic. The Foundation supported Food Link in conjunction with other community groups. Food Link provided 4,000 meals over 16 weeks to households which were significantly impacted by the pandemic.

Whilst much has been achieved, more needs to be done to ensure that disadvantage is reduced in Greater Shepparton, and that our community members can achieve their best outcomes.

The Fairley Foundation continues to aspire to drive momentous social and cultural change within Greater Shepparton.



Andrew Fairley AM
Chair



Executive Report

Everything we do at the Sir Andrew and Lady Fairley Foundation is designed to contribute to supporting the Greater Shepparton community.

This past 12 months has seen our community face real challenges following the global pandemic. This crisis is still playing out, but it has redefined the importance of place-based, connected and community-lead approaches to resilience and recovery.



Accordingly, the Fairley Foundation has stepped up to the plate, investing further funding in vital areas like the longstanding Neighbourhood Schools Program, to train more Play Therapists to address the high levels of environmental trauma identified in our region's low SES schools.

Environmental trauma impacts a child's ability to regulate reason and logic, it disrupts their memory functioning, attention capacity, relationships and attachment, limits their adaptability to change, diminishes social skill development, and isolates children from their peers.

Dr Peter Eastaugh and his team have identified 30.2% of the over 500 children assessed have obvious signs of environmental trauma, a figure that is only predicted to increase as the community emerges from isolation and the true impact on families is realised.



Amanda McCulloch
Executive

Being proactive in providing vital support for programs like the Neighbourhood Schools in times of crisis is essential and we are incredibly proud, and grateful to our change agents in the community for leading the recovery efforts.



Trustees



Andrew Fairley AM Chair

Andrew Fairley practises as a Commercial Lawyer at Hall & Wilcox in Melbourne. He has a long involvement with the philanthropic sector, and has been Chair of the Fairley Foundation since 1999. He is a great-nephew of Sir Andrew Fairley.

He is also Chair of the Foundation for Alcohol Research & Education, and Deputy Chair of the Mornington Peninsula Foundation. He is a recognised leader in the financial services sector, Charing Equip Super and Catholic Super with combined assets of \$27b. He is a Director of the Australian Financial Complaints Authority, and a Director of Qualitas Securities Pty Ltd. He follows in the long tradition of his family in the fruit industry, and owns and operates a cherry farm in the Yarra Valley.



Carmel Johnson Deputy Chair

Carmel Johnson has been living and working in the Goulburn Valley for more than 35 years. During this time Carmel has primarily worked in fundraising and community relations roles, and with her Special Education qualifications, served as the inaugural Principal of Verney Road Special School and later as Manager at Connect GV in Shepparton. Carmel's current role is as Director of the GV Health Foundation, assisting the GV Health Board and Executive with financial and philanthropic support to ensure that the community of the Goulburn Valley is well served. Carmel was the inaugural Chair of the Shepparton Arts Festival and serves on a number of corporate and community boards. Carmel is Deputy Chair of the Foundation.



Terry Campbell AO

Terry Campbell AO is a great-nephew of the late Sir Andrew. Terry is Senior Chairman of Goldman Sachs, the global and investment banking firm. He is also Chairman of Mirrabooka Investments Limited and former senior partner of J.B. Were. He is a supporter of corporate social responsibility through contributions to community and charitable organisations. He is also a strong advocate of Australian Business Participation in the Arts and is the Vice Chair of the National Gallery of Australia Foundation.



James Freemantle AO

James Freemantle, a great-nephew of Sir Andrew, is a Company Director and former banker. He has been the Chair and Director of a number of public, private and Government organisations over the past 15 years with a particular interest in the not-for-profit sector. James is passionate about supporting people with disabilities, specifically through the provision of affordable housing and employment opportunities.



Fiona Phillips

Fiona Phillips is the daughter of Rosemary Hopkins (nee Fairley) and was appointed a Trustee in December 2013. Fiona has taught in and through music in a variety of educational and community settings in regional Victoria. Her work with Early Years and Primary School practicing and pre-service teachers is significant and she currently holds the position of Associate Lecturer in Arts Education at Deakin University, Geelong. Her research and scholarship have focused on the ongoing practices of exploring new pedagogies, to inform and facilitate change in Arts Education (Music) within a located, cloud-based and virtual teaching and learning environment. She loves to sing and help others find their voice.



Andrew Mott

Andrew Mott has been involved in music education for 30 years with experience in both regional and metropolitan schools and across numerous government and independent school music programs. He undertook a two-year stint in Michigan, USA, completing a Masters in Music. In recent years, he has served as Director of Music at Blackburn High School and as the Head of Music, Caulfield Campus, Caulfield Grammar. He has a particular interest in the development of music ensemble performance and has worked in all areas, from symphony orchestras to jazz big bands. Andrew has also served as a member of the University of Melbourne's Faculty of Music Board and on the AMEB Examinations Advisory Board, representing government schools at various times.



Georgina Fairley

Georgina Fairley has been practising Architecture for nine years, following completion of her Masters of Architecture in 2010. Her current focus is on design for community and learning in both metropolitan and regional areas. With interests ranging across a wide range of subjects, Georgina keenly seeks ways to engage with the world around her, from further education and attending local events, to volunteering.



Anna Turnbull

Anna Turnbull is a Goulburn Valley community-member, appointed trustee in 2019. She is a communications specialist with a Bachelor of Arts (political science). Working initially in newspapers as a reporter, she has gone on to develop her knowledge of the water industry and natural resource management through various media and communications roles in the Shepparton region. Her past board roles include the Rodney Neighbourhood Steiner Kindergarten and Shepparton Arts Festival. Anna is a current board member for the Greater Shepparton Foundation. Anna grew up in Melbourne, but since 2002 she has lived on the Turnbull family orchard, with her husband Chris. They have three young children. Passionate about enabling regional access to the arts, Anna values Shepparton's relentless community spirit and innovative thinking, making this challenge a reality. She is grateful for the opportunity and unique lifestyle this rural setting provides.



Michael McIlroy

Michael is an experienced commercial and property Lawyer and is a Director of Shepparton's oldest law firm, Camerons Lawyers.

With a bachelor's degree in Commerce (Accounting) and in Law, Michael has leant upon his prior experience operating Hospitality businesses to combine his past business experience and tuition to become a trusted Lawyer for local business in the Goulburn Valley community.

Michael has been involved with various sporting clubs in the Goulburn Valley, along with lecturing Business Law and Environmental Law at the La Trobe University Shepparton campus.



**The Heinze Music Program
celebrated 10 years of
operation in 2019.**

Heinze Music Program



The Heinze Music Program is a specialist school foundation music education and instrumental program for students in the Greater Shepparton area.

Named in honour of Shepparton born Sir Bernard Thomas Heinze (1894-1982), a musician, conductor and one of the dominant musical figures of twentieth-century Australia, the Heinze Music Program is a vehicle to support intergenerational disadvantage, social disengagement and poor educational outcomes in young people.

Research supports early music education as a viable method for enriching students strategic thinking, learning, creativity, cognitive development and connection. Funding for music education in schools, however, is limited and competitive – which is why the Heinze Music Program was established.

In 2019/2020 Heinze Music Program operated band and classroom music across six primary schools, Tatura Primary, Murchison Primary, Mooroopna Primary, Mooroopna Park Primary, Mooroopna North Primary and Dhurringile Primary, and a band program at Mooroopna Secondary College.

The Fairley Foundation supports the program by providing instruments, funding the employment of educators and providing buses to transport students, who would have no other means to get to and from lessons.

2019 Fairley La Trobe Lecture

On Wednesday 17th July the Fairley Foundation, in partnership with La Trobe University, held its 9th annual Fairley La Trobe Lecture 'Building the Past, Building the Future, Immigration, Refugees and Multiculturalism'.

Keynote speaker, Melbourne barrister, human rights and refugee advocate and author, Julian Burnside AO QC attracted unprecedented interest, with over 300 guests in attendance.

Pictured from left; Fairley Foundation Chair Andrew Fairley AM, LaTrobe University Head of Campus Elizabeth Capp, Julian Burnside AO QC, Deputy Chair Fairley Foundation Carmel Johnson and Vice-Chancellor LaTrobe University Professor John Dewar AO.



Greater Shepparton Foundation

The Fairley Foundation has provided \$100,000 funding per annum over 5 years to support the formation of the Greater Shepparton Foundation.

Established in February 2019, the Greater Shepparton Foundation (GSF) has a mandate to significantly reduce complex socio-economic disadvantage in Greater Shepparton and surrounds.

The Fairley Foundation have made a commitment to support the GSF achieve its bold vision to have “no one living with disadvantage in Greater Shepparton.”

Programs the Greater Shepparton Foundation are delivering with Fairley's support include the Oral Language (OLI) in the Foundation Years pilot project, the Early Start to Kinder project, The Cottage drug rehabilitation support program and the C's Camping Program.

Case study: Early Start to Kinder (Esk) Project



Aimed at increasing the number of vulnerable children from the culturally and linguistically diverse (CaLD) community in 3-year old kindergarten, ESK will provide a means to improving children's cognitive, emotional and social development improving their readiness for school and their preparedness for life.

Greater Shepparton's AEDC profile identifies 1 in 2 CaLD children in our community, are developmentally vulnerable on one or more domains by the time they commence school. It is noted that access to early learning will assist to reduce these alarming figures.

The ESK project, developed in collaboration with Uniting Goulburn North East and Best Start Early Learning Years Partnership, is being delivered over three years, with year one giving 30 families early access to 3-year old kinder.

This is one program the Greater Shepparton Foundation are delivering with the financial assistance of the Ross Trust Foundation and Fairley Foundation.

Projects





1 Shepparton Art Museum

The new Shepparton Art Museum (SAM) building is an outstanding example of exciting, best-practice contemporary museum architecture designed by one of Australia's leading architects on a remarkable site in regional Victoria.

The Fairley Foundation has made a significant contribution to support the SAM development with this years' \$100,000 concluding a total contribution to date of \$500,000.

Due for opening in October 2021 the new Shepparton Art Museum will house the Visitor Information Centre, Kaiela Art Gallery and Studio, a forecourt and Amphitheatre named in honour of the Fairley Foundation and it's significant contribution to SAM.



Pictured from left; Fairley trained Play Therapists, Clare Rich, Ashleigh Cottrill and Glenda Vibert.

2 Play Therapy Training

The Foundation has supported Consultant Paediatrician Dr Peter Eastaugh, with \$12,000 funding over the past 12 months to assist with the costs of training qualified Play Therapists.

This follows recommendations steaming from the Neighbourhood Schools program, whereby teachers and administrators identify children with developmental and behavioural difficulties, who are referred on to a Community Paediatrician for a developmental and behavioural assessment.

Over the past 8 years of the Neighbourhood Schools Program, 500 children have been assessed, and a multidisciplinary case conference convened where a management plan is put in place.

This process through the school environment, enables a collaborative approach to treatment, with classroom and playground intervention, home behaviour management and specialist Play Therapy and therapeutic specialists involved. Where necessary referral to outside agencies also occurs.

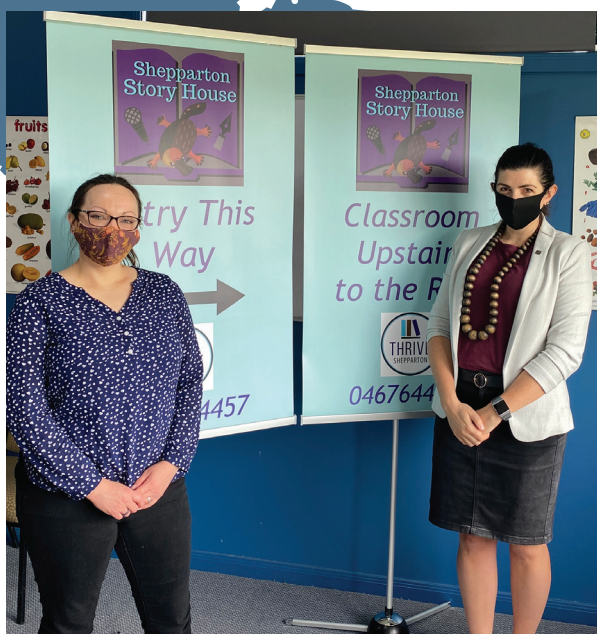
“Without the financial support of the Sir Andrew and Lady Fairley Foundation, many of Shepparton most vulnerable children would not have access to early intervention and therapy.” Dr Peter Eastaugh.

“What *“Therapeutic play is an important and vastly under resourced psychotherapeutic intervention, that has been shown to assist the neurological repair of children who have experienced environmental trauma,”* explains Dr Eastaugh.

The Neighbourhood Schools project has identified 30.2% of children assessed have obvious signs of environmental trauma, which impacts on their ability to regulate reason and logic, disrupts their memory functioning, attention capacity, relationships and attachment, limits their adaptability to change, diminishes social skill development, and isolates children from their peers.

3

Shepparton Story House



Pictured from left; Shepparton Story House Program Manager, Lacey Lengel and Fairley Foundation Executive, Amanda McCulloch.

The Shepparton Story House program of Thrive Shepparton offers free English classes and storytelling opportunities with the goal of helping community members reach English fluency while creating an environment for cross-cultural exchange, education, and friendship.

Greater Shepparton welcomes a high percentage of new migrants, and 15% of our community speak a language other than English at home (ABS, 2016). The Shepparton Baptist Church supports two Congolese Fellowship groups plus one Chinese speaking and one Indonesian Church community. Shepparton Story House brings together these groups, alongside new migrants from the Syrian, Kurdish, Iraqi, Afghani, Malaysian, Sudanese, Vietnamese, Filipino and Indian communities to share stories and learn English. Classes are focussed on personal narrative, Creative Writing, English Bible Stories and a weekly Friendship Café.

The Fairley Foundation have supported the Shepparton Story House Thrive Shepparton program, which despite COVID-19 restrictions, was able to launch online in 2020 and has 35 regular students. WhatsApp English chat groups and Facebook story telling have been used as a methods of engagement and participation during isolation.

Case study: Story house

Recent arrival, Lilah* lives not far from the Shepparton Baptist Church.

She is a refugee, who is unable to attend TAFE English classes because she is primary carer for a family member.

Lilah begun attending the Thrive Friendship Café when it launched, often bringing along her young family and enjoying time out of the house to catch up with new friends. During isolation Lilah was not strongly engaged with online learning, but when Level 1 'in person' classes opened, Lilah has not missed a class, and is often the first one there, determined to learn and has even brought in other participants to the Friendship Café and classes.

**Name changed for privacy purposes.*

4 Shepparton Festival

The Fairley Foundation has a longstanding partnership with the Shepparton Festival and acknowledges the vulnerability of events in a time of pandemic.

The Shepparton Festival was able to deliver an opening weekend of events for 2020 EVOLVE, which produced some inspiring artworks, community collaborations and incredible highlights, but unfortunately the 2020 Festival was cancelled on 16th March.



Quarry Chorus

Approximately 700 people of all backgrounds and ages attended this free, at capacity, multi-layered spectacular at the magnificent Dookie Quarry.

The immersive experience was the final event of Shepparton Festival 2020 before the pandemic restrictions were put in place and the remainder of the Shepparton Festival cancelled.



Affinity Quartet: Performances and Workshop

The Fairley Foundation supported the Affinity Quartet across four performances as part of the opening weekend of the Shepparton Festival.

An audience of 150 were delighted by the precision, passion and brilliance of these world-class musicians, who generously delivered a workshop that was attended by a group of 9 local musicians who already regularly play together.

Attendees remarked on how amazing it was that there were musicians at Shepparton Festival who can play to a world-class standard, and that this workshop gave them an opportunity to collaborate with and be inspired by some of the top performers in their field.

While not able to be delivered in 2020, this workshop will form part of the 2021 Shepparton Festival.



Top: Quarry Chorus crowd settles in as the sun sets and the performances begin. Bottom: Affinity Quartet musicians.



The Fairley Foundation's support has never been more important than right now: The arts is one of the most vulnerable and strongly COVID-affected sectors." Fiona Smolenaars Chair Shepparton Festival.

5

McGuire College Marimba Workshop



McGuire College students playing music on bikes as part of Jon Madin workshop.

In November 2019 McGuire College and Bouchier Street Primary School participated in a marimba workshop with marimba expert Jon Madin.

Students learned how to assemble and play marimbas and participated in a concert for the school student body. The incursion was a collaboration designed to bring together students who don't have regular access to music education, and create a participatory, inclusive and accessible opportunity which places value on children's active engagement in music-making.

6 Food Link

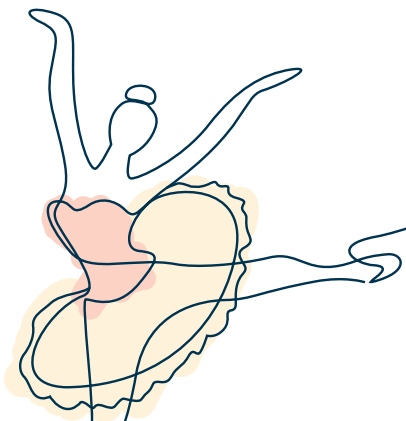
Food Link provides ready-cooked meals to hundreds of locals doing it tough throughout the COVID-19 pandemic.

A direct response to the food crisis, funds are raised through the Greater Shepparton Foundation to pay local catering businesses who have been impacted by restrictions and passed on to local food service agencies for distribution.

During the 12 weeks of the program, more than 3,000 meals were distributed and \$44,000 raised through community and philanthropic support.



Above from left: Fairley Foundation Executive, Amanda McCulloch and Greater Shepparton Foundation CEO, Cheryl Hammer.



7

Australian Ballet

The Australian Ballet and Better Together Alliance delivered the final year of their three-year education program in partnership with the Fairley Foundation.

The program reaches high school-aged students who have an interest in dance but do not have regular opportunities to work with professional dancers and dance educators. It allowed students to increase their technical, dance and choreography skills, and increased their knowledge of creative industry careers.

As part of this program students rehearsed each day for a week, including 11 hours of dance workshops. There they prepared their own co-created works, to be performed for families and friends at Riverlinks, as part of the Shepparton Festival.

Students were also amongst the first in Australia to see The Australian Ballet's new production, Plain Jane, which has been created for The Australian Ballet by Lucas Jervies. The work explored themes of resilience, personal identity and social pressure, and is targeted at upper primary and secondary students.



9

John Noble Quartet

John Noble Quartet performing at the Melbourne Recital Centre.

The Fairley Foundation supported the John Noble Quartet to provide 12 innovative mentor sessions via Skype and in-person, with renowned musician John Noble.

Support for the music sessions lead to an ensemble performance for aged care facilities in Shepparton, Benalla, Euroa and Wangaratta, as well as a mentor session and three-hour sold-out performance with Flinders Quartet at Chapel on Maude.

The highlight of the JNQP is the celebration concert on Sunday 3rd November presented by Melbourne Recital Centre. The sold-out concert had a wait list of over 100 people.

The 2019 program has seen greater professional development opportunities, more challenging repertoires, and the growth of an ensemble in Shepparton that the community lauds and encourages.

Bangerang Cultural Centre 8



Pictured from left: Bangerang Cultural Centre Manager, Clinton Edwards, Regional Business Toolkit, Caolan O'Connor and Fairley Foundation Executive, Amanda McCulloch.

The Bangerang Cultural Centre occupies a significant place in Shepparton's cultural landscape as a keeping place for priceless Indigenous art and artefacts from across Australia.

As the first Aboriginal museum of its kind in Australia, and the first Aboriginal cultural centre located outside a capital city, the historical importance of the Bangerang Cultural Centre has been recognised by the Victorian Heritage Register.

The Fairley Foundation provided seed funding to support the Cultural Centre establishing an education toolkit, as an interactive part of telling the Bangerang story.

10

True Vision



The Fairley Foundation supported local film maker Diana Fisk in producing a heart-warming documentary about her son, Alfie, who is diagnosed with Nystagmus – a vision condition caused by an abnormal function in the brain.

True Vision weaves the story of Para-Olympic athlete and Stargardt's disease sufferer Jess Gallagher's incredible achievements alongside the determination of Diana Fisk as she navigates daily life with Alfie (now 4). Through these two women on opposite sides of a diagnosis coming together, and the subsequent friendship that developed, we see the real potential and opportunity of a life otherwise labelled as difficult. True Vision is an exploration of how people deal with the obstacles in their lives, and the perceptions that go hand in hand with diagnosis and disability.

The film was screened on Compass.

11

Science Schools Program

The Fairley Foundation supports students with an interest in Agricultural Science to attend the Conoco Phillips Science Experience camp at University of Melbourne's Dookie College campus. The camps are one method of exposing young people to the exciting career options available in the science and technology areas and enable students to experience this within the University environment.

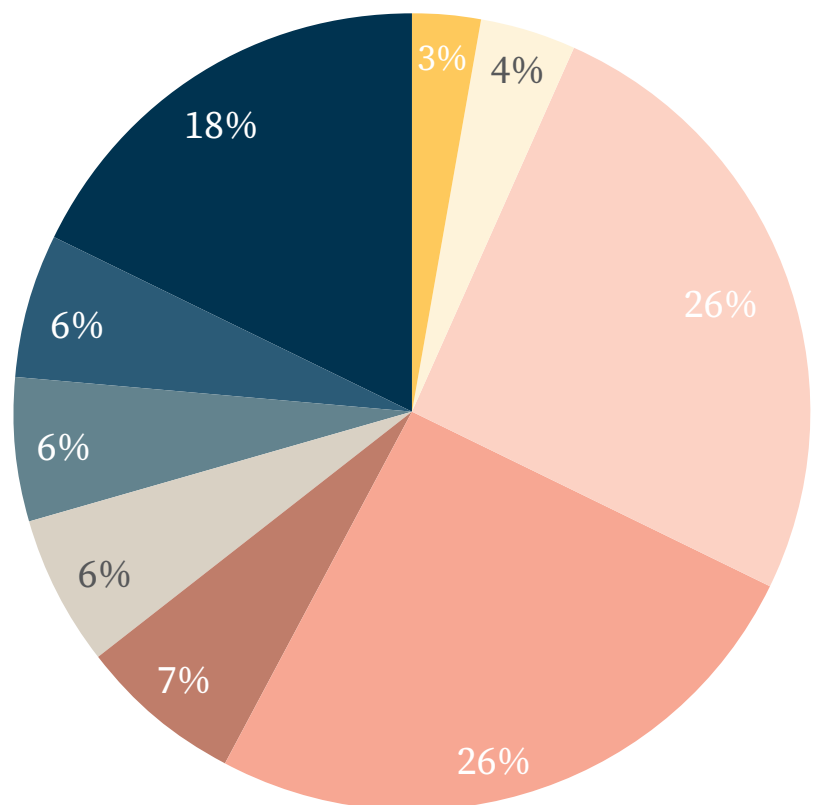
16 Student places from secondary schools throughout Shepparton were able to participate in the Conoco Phillips Science Experience.



Funding

Overview of spend

- Early Intervention
- Crisis Response and Necessitation Need
- Greater Shepparton Foundation
- Shepparton Art Museum
- Arts and Festivals
- Dance and Music
- Lectures, Leadership and Education
- Multicultural and Indigenous
- Heinze Music program





2019/2020
Annual Report

144 Welsford St, Shepparton VIC 3630
www.fairleyfoundation.org