

2018/2019 Annual Report

Arts, culture & liveability

THE SIR ANDREW & LADY
FAIRLEY
FOUNDATION

Contents

History	3	Projects	11	Worawa Aboriginal College	15
Chairs Report	4	Shepparton Art Museum	11	Awaken Dance Theatre	
Executive Report	5	Mansfield Autism Statewide Service .	11	Company - I Am	16
Trustees	6	Melbourne Symphony Orchestra.....	12	Carmillar	17
Greater Shepparton		Voices for Kids	12	Caroline Chisholm Institute	
Foundation	8	McGuire College &		GV Pregnancy and Family	
Fairley La Trobe Lecture	8	Bourchier St Primary School		Support Service.....	17
Research Projects	9	- Marimba Incursion	13	Ganbina - JOBS4U2 Program	17
Heinz Music Program.....	10	Conoco Phillips Science Experience -		Shepparton Festival.....	18
		Dookie College	13	International Model	
		Australian Ballet.....	14	United Nation Conference.....	19
		John Noble Quartet	15	Lulla's Kindergarten	
				& Children Centre	19



Contact

Amanda McCulloch
Executive Officer

144 Welsford St, Shepparton VIC 3630
M 0481 315 684
E amanda@fairleyfoundation.org
www.fairleyfoundation.org

Acknowledgement of country

The Sir Andrew & Lady Fairley Foundation wishes to acknowledge the traditional custodians of the land which now comprises Greater Shepparton. We pay respect to the tribal elders, past present and emerging, celebrate their continuing culture and connection to land, water and community.



History

The Sir Andrew and Lady Fairley Foundation (Fairley Foundation) was established in 1965 with a bequest from respected Shepparton businessman, Sir Andrew Fairley and his wife Mineta. As Managing Director of Shepparton Preserving Company Ltd. (SPC) Sir Andrew created what by the mid-1960's was the largest fruit preserving and canning complex in the southern hemisphere. In 1927 he became the first Mayor of Shepparton and from 1948 the

first Mayor of the City of Greater Shepparton.

According to his instructions, the Fairley Foundation is for the benefit of the people and communities of the Greater Shepparton area. Over the last 50 years, the Foundation has been recognised as a trusted voice in the community, influential in many areas of local life: education, employment, the arts, health, sport and social justice.



Vision & Objectives

Vision:

Drive momentous social and cultural change in Greater Shepparton

Objectives:

- Enable a flourishing arts culture in Greater Shepparton
- Facilitate the success of the Greater Shepparton Foundation
- Promote liveability and acceptance in Greater Shepparton

Chairs Report

On behalf of the Trustees of the Fairley Foundation I am pleased to present the 2019 Annual Report.

The Fairley Foundation has been working for a number of years on an innovative philanthropic approach to assist Greater Shepparton tackle severe disadvantage and wicked social issues.



In May 2019, after years of planning and preparation, the Greater Shepparton Foundation was launched. This grass roots organisation is designed as a DGR1, Public Benevolent Institution (PBI), which allows it to engage and collaborate with community-based organisations, to deliver programs for the relief of the area's significant social disadvantage.

The Fairley Foundation continues to financially and collaboratively support the Greater Shepparton Foundation during this establishment phase, while also supporting arts, culture and liveability throughout the Greater Shepparton community.

One of the many highlights of 2019 was the partnership with La Trobe University on the 9th Fairley La Trobe Lecture.

We were honoured to welcome Julian Burnside AO QC, who addressed a large and highly engaged audience with his lecture, "Building the Past, Building the Future: Immigration, Refugees, Multiculturalism".

Another highlight of 2019 was seeing works start on the Shepparton Art Museum.

Sir Andrew Fairley was instrumental in establishing the first Shepparton Art Museum in 1937, gathering necessary capital and an SPC donation of 25,000 pounds.

To date Fairley Foundation's contribution to the new SAM has exceeded \$500,000 and the Trustees have endorsed a further financial commitment to be announced by the SAM Foundation in 2020.

As we watch this incredible architectural beacon that is SAM emerge on the banks of Victoria Park Lake, we are reminded and humbled by the vision of Sir Andrew Fairley and we, his Trustees, are proud to continue supporting the Greater Shepparton community.

Andrew Fairley AM
Chair



Executive Report

With a full year in the Executive role with the Fairley Foundation, it is wonderful to reflect on home-grown examples of authentic, community driven philanthropy we are proudly supporting.

Look no further than the Heinze Music Program for evidence of this!

In 2009 the Fairley Foundation sought an effective vehicle to reverse the frightening statistics in Greater Shepparton of those suffering intergenerational disadvantage, social disengagement and poor education outcomes. The Heinze Music program emerged from national research attesting to the educational, personal and social impacts of high-quality music education.



Ten years on and the Heinze Music Program is more than a music program. Research shows it is changing students approaches to learning, their confidence, self-esteem, persistence and patience is improving. It is resulting in better than expected academic growth, parental engagement and attitude towards school on the whole is trending upward.

Teachers are even noting greater school attendance and improved school culture as outcomes of Heinze Music Program operating its instrumental lessons and band programs underpinned by performance opportunities and collaborative mentoring.

As we embarked on a strategic review of the Heinze Music Program this year, it became evident from every stakeholder, teacher, principal and student we spoke with – this program is not only important in schools in Greater Shepparton – but essential.

The Fairley Foundation's support of the Melbourne Symphony Orchestra and Australian Ballet's regional touring and education programs, alongside the Shepparton Festival, Lulla's Children Centre and Mansfield Autism Statewide Services, demonstrates the varied and diverse ways we are supporting the community.

As we turn our attention to 2020 and beyond, our challenge is to find new ways to support these game-changing programs that are having such a positive impact on the Greater Shepparton community.

Amanda McCulloch
Executive



Trustees



Andrew Fairley AM Chair

Andrew Fairley practises as a Commercial Lawyer at Hall & Wilcox in Melbourne. He has a long involvement with the philanthropic sector, and has been Chair of the Fairley Foundation since 1999. He is a great-nephew of Sir Andrew Fairley.

He is also Chair of the Foundation for Alcohol Research & Education, and Deputy Chair of the Mornington Peninsula Foundation.

He is a recognised leader in the financial services sector, Chairing Equip Super and Catholic Super with combined assets of \$27b. He is a Director of the Australian Financial Complaints Authority, and a Director of Qualitas Securities Pty Ltd. He follows in the long tradition of his family in the fruit industry, and owns and operates a cherry farm in the Yarra Valley.



Carmel Johnson Deputy Chair

Carmel Johnson has been living and working in the Goulburn Valley for more than 35 years. During this time Carmel has primarily worked in fundraising and community relations roles, and with her Special Education qualifications, served as the inaugural Principal of Verney Road Special School and later as Manager at Connect GV in Shepparton. Carmel's current role is as Director of the GV Health Foundation, assisting the GV Health Board and Executive with financial and philanthropic support to ensure that the community of the Goulburn Valley is well served. Carmel was the inaugural Chair of the Shepparton Arts Festival and serves on a number of corporate and community boards. Carmel is Deputy Chair of the Foundation.



Terry Campbell AO

Terry Campbell AO is a great-nephew of the late Sir Andrew and Lady Fairley, for whom the foundation is named. Terry is Senior Chairman of Goldman Sachs, the global and investment banking firm. He is also Chairman of Australian Foundation Investment Company (AFIC) and Mirabooka Investments Limited. He is a supporter of corporate social responsibility through contributions to community and charitable organisations. He is also a strong advocate of Australian Business Participation in the Arts and is the Vice Chair of the National Gallery of Australia Foundation.



James Freemantle

James Freemantle, a grandnephew of Sir Andrew and Lady Fairley, is a Company Director and former banker. He has been the Chair and Director of a number of public, private and Government organisations over the past 15 years with a particular interest in the not-for-profit sector. James is passionate about supporting people with disabilities, specifically through the provision of affordable housing and employment opportunities.



Fiona Phillips

Fiona Phillips is the daughter of Rosemary Hopkins (nee Fairley) and was appointed a Trustee in December 2013. Fiona has taught in and through music in a variety of educational and community settings in regional Victoria. Her work with Early Years and Primary School practicing and pre-service teachers is significant and she currently holds the position of Associate Lecturer in Arts Education at Deakin University, Geelong. Her research and scholarship have focused on the ongoing practices of exploring new pedagogies, to inform and facilitate change in Arts Education (Music) within a located, cloud-based and virtual teaching and learning environment. She loves to sing and help others find their voice.



Andrew Mott

Andrew Mott has been involved in music education for 30 years with experience in both regional and metropolitan schools and across numerous government and independent school music programs. He undertook a two-year stint in Michigan, USA, completing a Masters in Music. In recent years, he has served as Director of Music at Blackburn High School and as the Head of Music, Caulfield Campus, Caulfield Grammar. He has a particular interest in the development of music ensemble performance and has worked in all areas, from symphony orchestras to jazz big bands. Andrew has also served as a member of the University of Melbourne's Faculty of Music Board and on the AMEB Examinations Advisory Board, representing government schools at various times.



Georgina Fairley

Georgina Fairley has been practising Architecture for nine years, following completion of her Masters of Architecture in 2010. Her current focus is on design for community and learning in both metropolitan and regional areas. With interests ranging across a wide range of subjects, Georgina keenly seeks ways to engage with the world around her, from further education and attending local events, to volunteering.



Anna Turnbull

Anna Turnbull is a Goulburn Valley community-member, appointed trustee in 2019. She is a communications specialist with a Bachelor of Arts (political science). Working initially in newspapers as a reporter, she has gone on to develop her knowledge of the water industry and natural resource management through various media and communications roles in the Shepparton region. Her past board roles include the Rodney Neighbourhood Steiner Kindergarten and Shepparton Arts Festival. Anna is a current board member for the Greater Shepparton Foundation. Anna grew up in Melbourne, but since 2002 she has lived on the Turnbull family orchard, with her husband Chris. They have three young children. Passionate about enabling regional access to the arts, Anna values Shepparton's relentless community spirit and innovative thinking, making this challenge a reality. She is grateful for the opportunity and unique lifestyle this rural setting provides.

Greater Shepparton Foundation

Established in February 2019, the Greater Shepparton Foundation (GSF) has a mandate to significantly reduce complex socio-economic disadvantage in Greater Shepparton and surrounds.

GSF's focus is to support the most vulnerable and disadvantaged in our community and draw on local knowledge and source expertise from far and wide, to fulfil our core purpose – to be the connector of resources and skills to meet unmet need in our community. The GSF is committed to tackling complex issues such as unemployment, educational aspiration among our youth, early childhood development and homelessness.

The Fairley Foundation have made a commitment to the Greater Shepparton Foundation over the next five years in order to support the GSF achieve its bold vision to have “no one living with disadvantage in Greater Shepparton.”

Greater Shepparton Foundation is led by a diverse and highly skilled Board of Directors. The 10 Directors from Greater Shepparton and Melbourne offer a wealth of local knowledge and understanding of the complex issues in this region, as well as experience in place-based philanthropy and community-led giving.



2019 Fairley La Trobe Lecture



Pictured from left; Fairley Foundation Chair Andrew Fairley AM, LaTrobe University Head of Campus Elizabeth Capp, Julian Burnside AO QC, Deputy Chair Fairley Foundation Carmel Johnson and Vice-Chancellor LaTrobe University Professor John Dewar AO.

On Wednesday 17th July the Fairley Foundation, in partnership with La Trobe University, held its 9th annual Fairley La Trobe Lecture ‘Building the Past, Building the Future, Immigration, Refugees and Multiculturalism’.

Keynote speaker, Melbourne barrister, human rights and refugee advocate and author, Julian Burnside AO QC attracted unprecedented interest, with over 300 guests in attendance.

Research Projects

In 2019 the Fairley Foundation embarked on two research projects with Right Lane Consulting. The first research project was a strategic review of the Heinze Music Program, to identify ways to increase the impact of the program and improve the social and emotional well-being of children in Greater Shepparton

through the specialist foundation music education program.

The second research piece was in partnership with the Fairley Leadership Program to review best practice and explore how the Fairley Leadership Program can deliver greater impact to the community it serves.

This research included engagement with members of the community and Fairley Leadership Program alumni to identify specific needs of leaders in the region, a literature review of best practice case studies and clear recommendations for the future.

Presenting outcomes:

Right Lane Consulting's Jess Cossens presenting the Heinze Music Program outcomes to the Trustees.





Research supports early music education as a viable method for enriching students strategic thinking, learning, creativity, cognitive development and connection.

Heinze Music Program

The Heinze Music Program is a specialist school foundation music education and instrumental program for students in the Greater Shepparton area.

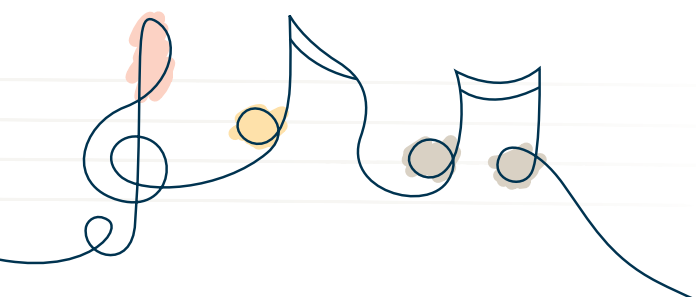
Named in honour of Shepparton born Sir Bernard Thomas Heinze (1894-1982), a musician, conductor and one of the dominant musical figures of twentieth-century Australia, the Heinze Music Program is a vehicle to support intergenerational disadvantage, social disengagement and poor educational outcomes in young people. The Heinze music Program celebrated 10 years of operation in 2019.

Research supports early music education as a viable method for enriching students strategic thinking, learning, creativity, cognitive development and connection. Funding for music education in schools, however, is limited and competitive – which is why the Heinze Music Program was established.

In 2019 Heinze Music Program operated band and classroom music across six primary schools, Tatura Primary, Murchison Primary, Mooroopna Primary, Mooroopna Park Primary, Mooroopna North Primary and Dhurringile Primary, and a band program at Mooroopna Secondary College.

The Fairley Foundation supports the program by providing instruments, supporting the employment of educators and providing buses to transport students, who would have no other means to get to and from lessons.

We would like to acknowledge and thank the Pratt Foundation for their financial support of the Heinze Music Program in 2018 and 2019.



Projects

1 Shepparton Art Museum

The new Shepparton Art Museum (SAM) building will be an outstanding example of exciting, best-practice contemporary museum architecture designed by one of Australia's leading architects on a remarkable site in regional Victoria. With construction due for completion in 2020, the Fairley Foundation have



made a significant contribution to support the SAM development with \$100,000 per annum over five years, plus a \$250,000 challenge grant, which will give the Fairley Foundation naming rights of the Amphitheatre space within the new development.

2 Mansfield Autism Statewide Service

Mansfield Autism Statewide Services is an independent not-for-profit organisation, which supports young people living with Autism, and their families. The Dookie campus caters to students aged between 11 and 18 years with Autism Spectrum Disorder and offers an individualised program for up to 12 students. The Fairley Foundation

supported Mansfield Autism Statewide Services with financial assistance to subsidise the costs for two families to send their children to the school. Program participants have been able to hone interests and take on responsibilities that will assist them in participating in the community at the completion of their schooling life.

3

Melbourne Symphony Orchestra



The Fairley Foundation has a longstanding relationship with the Melbourne Symphony Orchestra and in 2019 partnered to deliver professional development sessions, community music making program and its Musical Acknowledgement of Country featuring Victoria's 11 indigenous language groups and produced by Yorta Yorta musician Deborah Cheetham AO.

In September 2019 the MSO offered free professional development with local primary school teachers and generalist classroom teachers to incorporate music techniques into their everyday teaching methods.

The Melbourne Symphony Orchestra worked with 71 young musicians from the Heinze Music Program in a two-hour workshop lead by Thea Rossen and supported by MSO musicians.



A total of 317 community audience members, 1,208 primary school students and 39 teachers benefited from the Melbourne Symphony Orchestra's 2019 program in Shepparton.

4

Voices for kids

The Fairley Foundation supported the #voicesforkids campaign by Narelle Pell and Kathy Fuller in partnership with the GV Health Foundation and GV centre against sexual assault (CASA).

Narelle and Kathy were aware of the scary statistics in the Goulburn Valley around child sexual abuse, and by running 12 marathons over 12 months, raised enough funds 136 schools and kindergartens to receive a "Ditto in the Box" Keep Safe Education toolkit, to help children feel empowered to speak up.

This community lead project generated an incredible groundswell of support and the Fairley Foundation were proud to support the campaign.



5

Marimba Incursion

McGuire College &
Bourchier St Primary School

In November 2019 McGuire College and Bourchier Street Primary School participated in a marimba workshop with marimba expert Jon Madin. Students learned how to assemble and play marimbas and participated in a concert for the school student body. The incursion was a collaboration designed to bring together students who don't have regular access to music education, and create a participatory, inclusive and accessible opportunity which places value on children's active engagement in music-making.


6

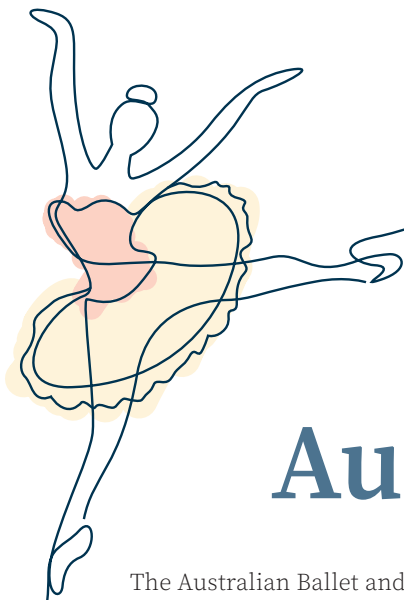
Conoco Phillips Science Experience

Dookie College

The Fairley Foundation supports students with an interest in Agricultural Science to attend the Conoco Phillips Science Experience camp at University of Melbourne's Dookie College campus. The camps are one method of exposing young people to the exciting career options available in the science and technology areas, and the camps enable students to experience this within the University environment.

16 student places from secondary schools throughout Shepparton were able to participate in the Conoco Phillips Science Experience in 2019.





7

Australian Ballet

The Australian Ballet and Better Together Alliance delivered the final year of their three-year education program in partnership with the Fairley Foundation. The program reached high school-aged students who have an interest in dance but do not have regular opportunities to work with professional dancers and dance educators. The program allowed students to increase their technical, dance and choreography skills, and increased their knowledge of creative industry careers.

The program involved four schools, Mooroopna Secondary College, Shepparton High School, McGuire College and Wanganui

Park Secondary College. As part of this program students rehearsed each day for a week, including 11 hours of dance workshops. There they prepared their own co-created works, to be performed for families and friends at Riverlinks, as part of the Shepparton Festival.

Students were also amongst the first in Australia to see The Australian Ballet's new production, Plain Jane, which has been created for The Australian Ballet by Lucas Jervies. The work explored themes of resilience, personal identity and social pressure, and is targeted at upper primary and secondary students.



8

John Noble Quartet



The Fairley Foundation supported the John Noble Quartet to provide 12 innovative mentor sessions via Skype and in-person, with renowned musician John Noble. Support for the music sessions lead to an ensemble performance for aged care facilities in Shepparton, Benalla, Euroa and Wangaratta, as well as a mentor session and three-hour sold-out performance with Flinders Quartet at Chapel on Maude.

The highlight of the JNQP is the celebration concert on Sunday 3rd November presented by Melbourne Recital Centre. The sold-out concert had a wait list of over 100 people.

The 2019 program has seen greater professional development opportunities, more challenging repertoires, and the growth of an ensemble in Shepparton that the community lauds and encourages.



9

Worawa Aboriginal College

The Fairley Foundation supported Shepparton Elder, Beverly Briggs, who was a flower girl at the first ever Aboriginal Debutante Ball in 1949, attend a recent Aboriginal Debutante Ball coordinated by the Worawa

Aboriginal College. 'Debutante Dreaming' is a fusion of traditional Aboriginal ceremonial practice and Western tradition to honour our young women's transition to adulthood – a rite of passage celebrated universally.



10

Awaken Dance Theatre Company I Am

Locally produced Awaken Dance Theatre Company sought the assistance of the Fairley Foundation to deliver their 2019 performance 'I AM' at Westside Performing Arts Centre on Friday 23rd and Saturday 24th March as part of the 2019 Shepparton Festival. The performance featured a cast of 25 young people from various social, cultural and socio-economic backgrounds. With varying levels of dance experience, students took on roles including Assistant Director, Assistant Choreographer and assisted with the lighting, costume, front of house, hair, makeup and music composition, which featured pre-recorded voices of cast members.

The 53-minute performance was a journey through past, present and future, with a strong message: regardless of life's setbacks or negative voices – we are the next generation of history makers.





11 Carnmillar

The Fairley Foundation supported Carnmillar Mental Health First Aid Training in Greater Shepparton, which included an Advanced Counselling Skills course. Approximately 20% of Australian adults experience a common mental illness each year. Completing a Mental Health First Aid (MHFA) Course helps develop the skills to support a friend, family member or co-worker, and make a real difference to the community.

The two-day MHFA course teaches adults (18 years and over) how to provide initial support to adults using an Evidence-Based Action Plan to assist people who may be:

- experiencing a mental health problem, or
- in a mental health crisis,

until appropriate professional help is received, or the crisis resolves. 18 community members and frontline industry participated in the training sessions.

Caroline Chisholm Institute GV Pregnancy and Family Support Service 12

Recognising a demand in the Greater Shepparton community, the Fairley Foundation supported the Caroline Chisholm Institute to purchase prams for expectant mothers in Shepparton who would otherwise not have the means to access a pram for their new baby. The pram purchase relieved a wait list

of families and operates on a reciprocal arrangement, with the safe return of prams a priority to maintain the program. Both new and second-hand prams were sourced in order to ensure the sustainability and re-use of quality items – so they don't end up in landfill.

13 Ganbina JOBS4U2 Program

The Fairley Foundation supported Ganbina to implement a suite of purpose designed programs to eliminate many obstacles facing indigenous youth in completing their education and gaining meaningful employment. The JOBS4U2 Program is an innovative education-to-employment transition program targeting jobs education, jobs training, jobs

employment, scholarships, leadership training, driver skills programs and youth achievement awards.

The Shepparton Learning Centre, Kip McGrath Learning Centre and primary school sessions were all hosted at Gambina with positive improvement markers achieved by students of the Accelerated Learning Program Participants.

14

Shepparton Festival

In 2019 the Fairley Foundation supported Shepparton Festival's Story Bowl. Funding was provided to support the delivery of four key events, a Yarra Brass Quintet performance at La Trobe University, Paint What You Hear, a Mini Story Bowl Festival and the Plain Jane performance by the Australian Ballet.

Paint What You Hear

The 'Paint What You Hear' event engaged the youngest community members, through a partnership with Lulla's and Arthur Dickman Children & Family Centres. Children connected with sounds and music to translate them into colourful banners.

Lulla's leader, Miranda Edwards, observed the powerful impact of expressing sensory experiences on the children, who were engaged, enthusiastic, and proud of their collaborative achievements.

"We will integrate this concept into our teaching program from now on" Miranda Edwards – Lulla's Children Centre

Mini Story Bowl

The 'Mini Story Bowl' encouraged children between eight and ten years to participate in an open-air mini festival at the Queens Gardens. Exposing children to art in its many forms, the Mini Story Bowl event includes paint-to-music workshops, creative art booklets, and workshops with event partners Shepparton Art Museum and the Shepparton Library.



Yarra Brass Quintet

The Yarra Brass Quintet performed at La Trobe University during the 2019 Shepparton Festival. Hailing from Shepparton, Simon Baldwin is one of the Quintet members, who is a passionate and dedicated performer.





15

International Model United Nation Conference

The Fairley Foundation partnered with Greater Shepparton City Council, Ethnic Council of Shepparton and GOTAFE Shepparton to sponsor Liaquat Ahmadi's attendance at the International Model United Nation Conference in Dubai.

Liaquat was selected from a significant list of worldwide emerging leaders, to discuss topics including diplomacy,

health, human rights, refugees, climate change, the economy and security, and has made connections with youth from 12 countries. Liaquat won the Outstanding Diplomacy award at the Conference and will continue volunteering and pursuing leadership roles in the Greater Shepparton community.

16

Lulla's Kindergarten & Children Centre

The Fairley Foundation supported Lulla's Kindergarten to purchase portable equipment that will enable pre-schoolers in Lulla's kindergarten program who have been identified and diagnosed with autism spectrum disorder (ASD) or are waiting a diagnosis of ASD with equipment and sensory play materials.

Up to 10% of children attending Lulla's either have ASD or are awaiting formal diagnosis and 90% of children attending the centre identify as Aboriginal or Torres Strait Islanders. It is the intention of Lulla's and the hope of the Fairley Foundation that we see all Shepparton's indigenous children reach their potential.



2018/2019

Annual Report

144 Welsford St, Shepparton VIC 3630

www.fairleyfoundation.org